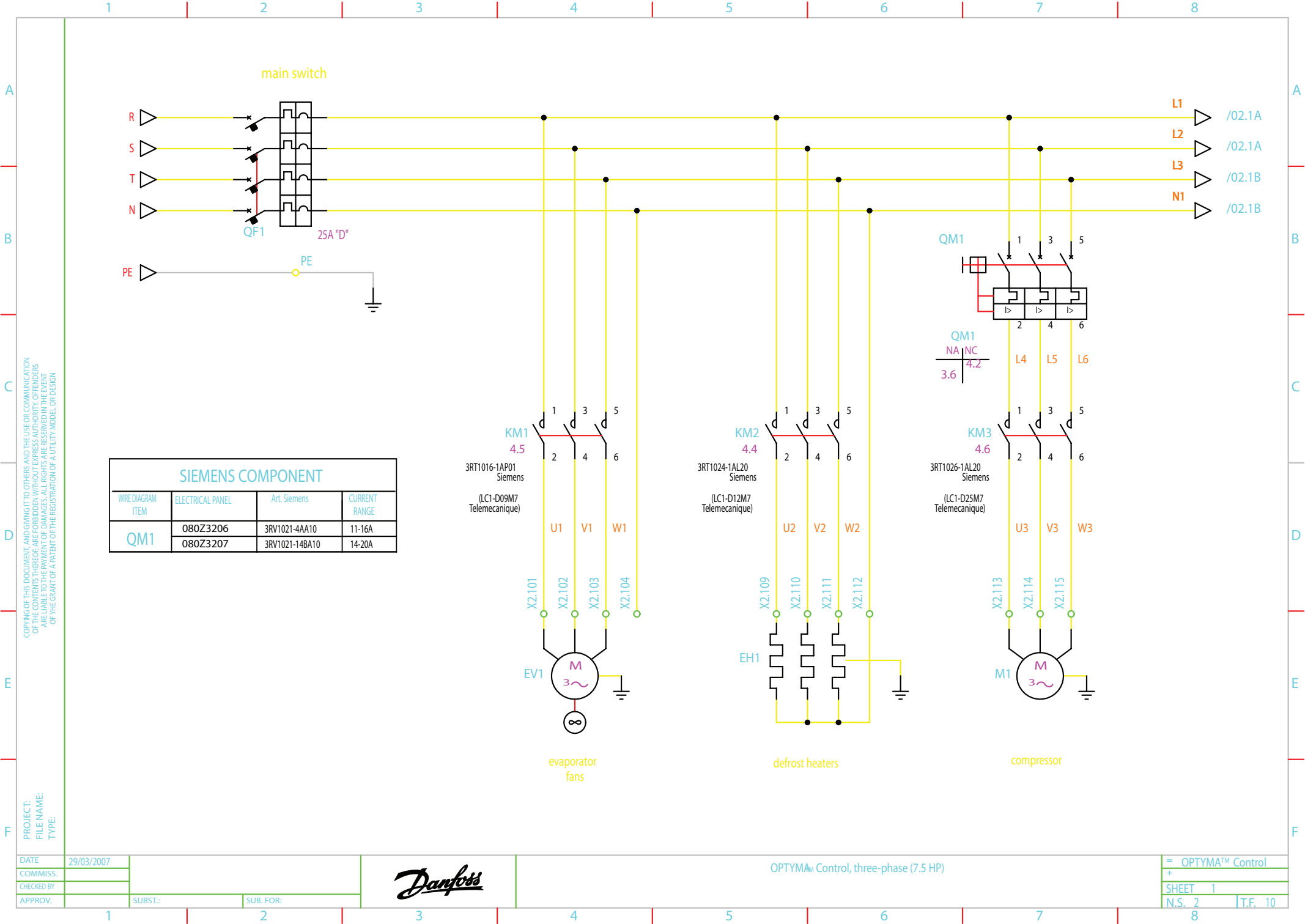




**OPTYMA™ Control AK-RC 103 (7.5 HP)**

# **Schematy elektryczne**



SIEMENS COMPONENT			
WIRE DIAGRAM ITEM	ELECTRICAL PANEL	Art. Siemens	CURRENT RANGE
QM1	080Z3206	3RV1021-4AA10	11-16A
	080Z3207	3RV1021-14BA10	14-20A

COPYING OF THIS DOCUMENT AND GIVING IT TO OTHERS AND THE USE OR COMMUNICATION OF THE CONTENTS FOR OTHERS WITHOUT THE WRITTEN PERMISSION OF THE COMPANY ENGINEERS ARE STRICTLY PROHIBITED. ALL RIGHTS ARE RESERVED. THE COMPANY ENGINEERS ARE NOT RESPONSIBLE FOR THE REGISTRATION OF A UTILITY MODEL OR DESIGN.

PROJECT:  
 FILE NAME:  
 TYPE:

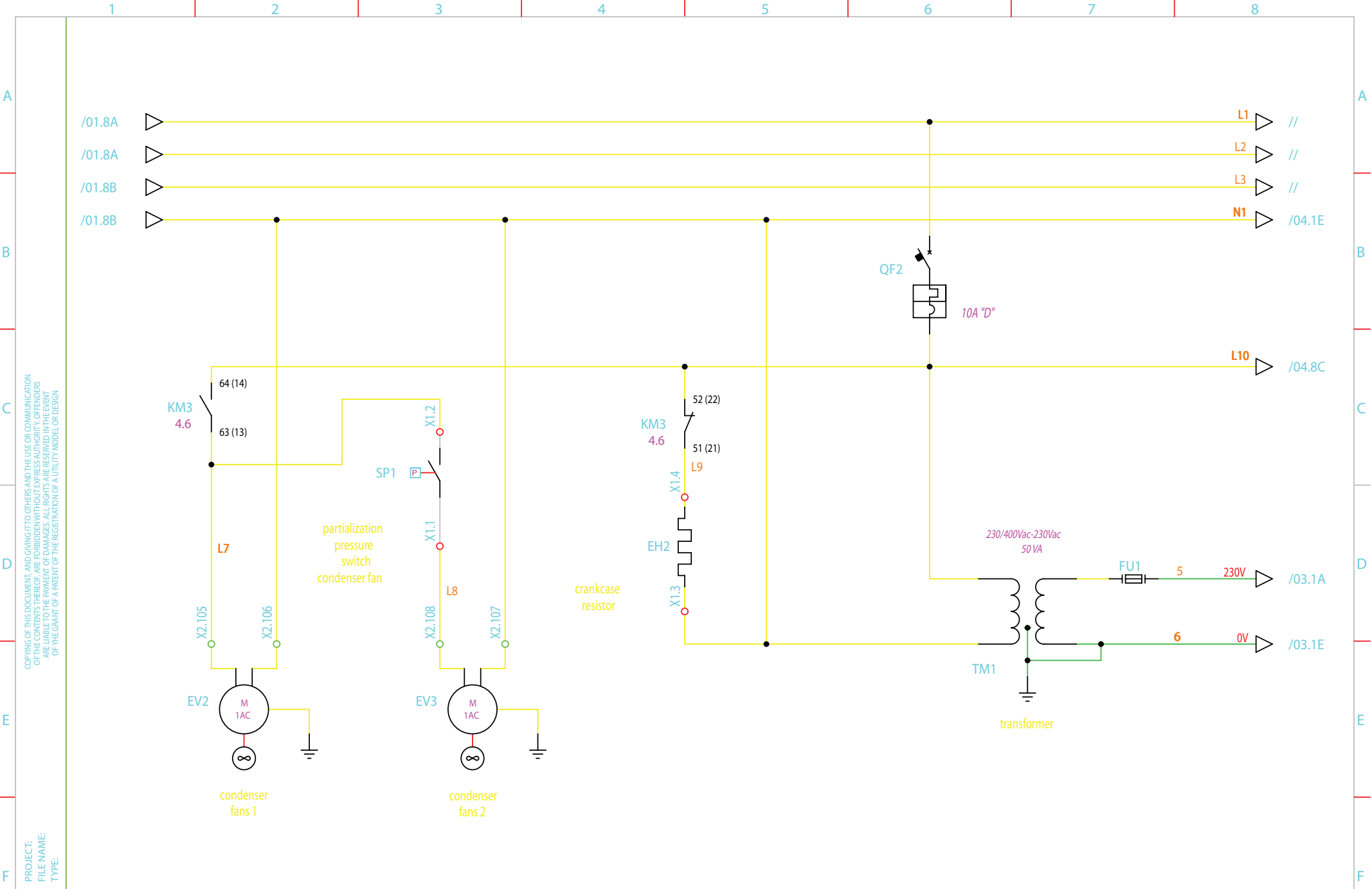
DATE	29/03/2007
COMMISS.	
CHECKED BY	
APPROV.	

SUBST.:	SUB. FOR:
---------	-----------



OPTYMA<sub>AM</sub> Control, three-phase (7.5 HP)

=	OPTYMA™ Control
+	
SHEET	1
N.S.	2
T.F.	10



OPTYMA™ Control, three-phase (7.5 HP)

=	OPTYMA™ Control
+	
SHEET	2
N.S.	3
T.F.	10











